

Architectural LED Solutions



LEDs you can trust

More than 15 years of experience in designing and manufacturing high quality LED solutions

Up to 40% energy savings

Up to 50,000 hours of reliable light

Reduced maintenance costs

Outstanding and uniform performance over system life

Easy installation



Hospitality



Architectural



Bridges



Tower Bridge, London, UK

LED Accent

Add additional lighting layers to highlight your spaces with GE LED Accent Lighting. Decorate objects, trim or accent pieces by skirting with even light uniformity and colour consistency. These low profile LED lighting modules work in harmony with other lighting elements and structures to provide subtle emphasis and drama to indoor design elements.



- Uniform light distribution
- Consistent colour with 3 step MacAdam ellipse binning
- Cut between every module for the right length
- Modular, low-voltage 12VDC system for easy installation
- Dimmable with GE 0-10V Dimming LED Driver or GE Dimming Module with GE LED Driver and compatible dimming controller
- IP54, dry or damp location rated
- Optional linear track for straight alignment
- Can be mounted at 0° or 30°

LED Cove

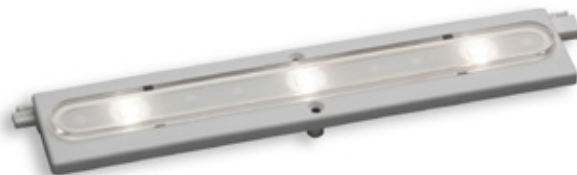


GE LED Cove provides a uniform light that can be used to draw attention to large areas and emphasise textures on vertical surfaces. Evenly distributes light over the ceiling and the upper part of walls & ceiling. Typically mounted in a cove recess.



- Precise use of light output and eliminates the socket shadows that is common when using fluorescent fixtures
- 0-10V dimmable (as low as 3%)
- Consistent colour with 3-step MacAdam ellipse colour binning
- Available in 110 degree beam angle
- IP20 rated

Tetra AL10



This linear LED system combines versatility with superb quality of light. High colour rendering (93 CRI) and consistent colour temperatures enable it to meet the high standards of the lighting industry. Replacing fluorescent technology in a variety of retail and architectural applications, this slim and modular fixture offers multiple lengths, beam angles and mounting angles – making it easy to incorporate into a wide array of designs.

Backed by GE's reputation for LED reliability, this robust, low-voltage system is rated to perform to 50,000 hours – reducing material and labour expenses associated with fluorescent relamping. Combined with reduced energy consumption – up to 40% compared to T5 fluorescent – Tetra AL10 lowers operating costs significantly.



- Slimline
- High colour rendering
- Multiple colour temperatures (warm & neutral)
- High light levels
- Low energy consumption
- 2 fixture lengths that can be combined
- Multiple beam angles
- Multiple viewing angles
- Low weight
- Long rated life of 50,000 hours
- Low-voltage 12VDC system
- Fully dimmable: 0-10V
- No UV or IR light emitted
- Contains no lead, mercury or glass – RoHS compliant
- 5 year warranty

Tetra® Contour

Tetra® Contour consists of a flexible LED light engine and a rigid, optically diffused light guide that can be heat formed to fit a variety of architectural needs. With a variety of colours to choose from, designers can mix and match components to create bold designs and attractive accent lighting without the typical worries of working with fragile neon glass.

Tetra® Contour is ideal for external border lighting, interior art, cove and accent lighting.



- Up to 40% more energy efficient than neon
- Low-voltage 24VDC system
- Dimmable with GE 0-10V Dimming Driver or GE Dimming Module and compatible dimming controller
- Contains no lead, mercury or glass – RoHS compliant
- Long rated life of 50,000 hours
- Multiple ANSI bin colour temperatures: red, green, blue, white & warm white
- Light guide colours: red, green, blue, white & clear
- 5 year warranty
- IP66 system rating with light guide

Crowne Plaza Doha, Qatar

Our Customer

With more than 4,400 properties in over 100 countries, Intercontinental Hotels Group (IHG) has some of the best-known hotel brands in the world. From the iconic family hotel, Holiday Inn, to the luxurious Crowne Plaza Doha, IHG brands are some of the most respected hotels in the industry.

The Challenge

The team at IHG needed the exterior lighting of the hotel to be of the highest quality to complement the stunning glass facade of the buildings. At the same time, given the location of the hotel in Qatar, on the coast of the Persian Gulf where temperatures can reach heights of up to 40°C, exterior lighting has to withstand extremely high temperatures and provide a long service life to extend maintenance cycles.

Our Solution

IHG partnered with local design firm Nouran concept and GE Lighting, and specified 2,400 metres of its Tetra Contour LED Lighting System in blue, red and warm white colour. The LED Tetra Contour is a flexible LED light engine that can be moulded on site to fit the shape of architectural features. GE's LED system was the ideal solution for the Crowne Plaza Doha due to its performance as well as aesthetic benefits.

Key benefits

- The system provides energy saving up to 40% compared to neon lighting
- 330 degree beam angle creates the warm "glow" associated with neon
- Weather resistant
- Rated life of over 50,000 hours



Tower Bridge, London, UK

Our Customer

The creation of architect Sir Horace Jones and civil engineer Sir John Wolfe-Barry, Tower Bridge is arguably one of London's most famous and widely recognised landmarks. It took eight years to complete and was officially opened on 30 June 1894. The extensive restoration and refurbishment of Tower Bridge was completed in time for the London Olympics 2012 and the Queen's Jubilee celebrations.

The Challenge

The new lighting scheme was integral to the overall project and as a listed monument, required detailed planning to ensure the aesthetics of the bridge were not altered but merely enhanced. Also, as GE was a London 2012 Sustainability Partner, a key objective of the new lighting scheme was to help improve energy efficiency.

Our Solution

More than 2 km of GE Lighting's Tetra Contour architectural LED lighting was installed on the stone and metal work of the bridge. Supplied in 2.44 m lengths, it takes the form of a flexible LED light engine that can be moulded on site to fit the shape of architectural features. Controls have also been installed enabling the mood of the lighting to be changed to suit different occasions. GE Lighting's 90W LED Floodlights, together with other lamps and fixtures, have also been installed on and around Tower Bridge, as direct replacements for the old and inefficient system.

Key benefits

- The system provides energy saving up to 40% compared to neon lighting
- 330 degree beam angle creates the warm "glow" associated with neon
- Weather resistant
- Rated life of over 50,000 hours



Tetra® Powergrid

Tetra® PowerGrid is a modular LED system that replaces fluorescent in backlighting applications that require broad, uniform lighting. This unique LED system provides long life, energy efficiency and brilliant, uniform light across a variety of backlit applications.



- Uniform light distribution through specialised optic
- Consistent colour with 3 step MacAdam ellipse binning
- Cut between every module for the right length
- Modular, low-voltage 24VDC system for easy installation
- Dimmable with GE 0-10V Dimming LED Driver or GE Dimming Module with GE LED Driver and compatible dimming controller
- IP54, dry or damp location rated

LED Accent



LED Cove



Tetra® AL10



Tetra® Contour



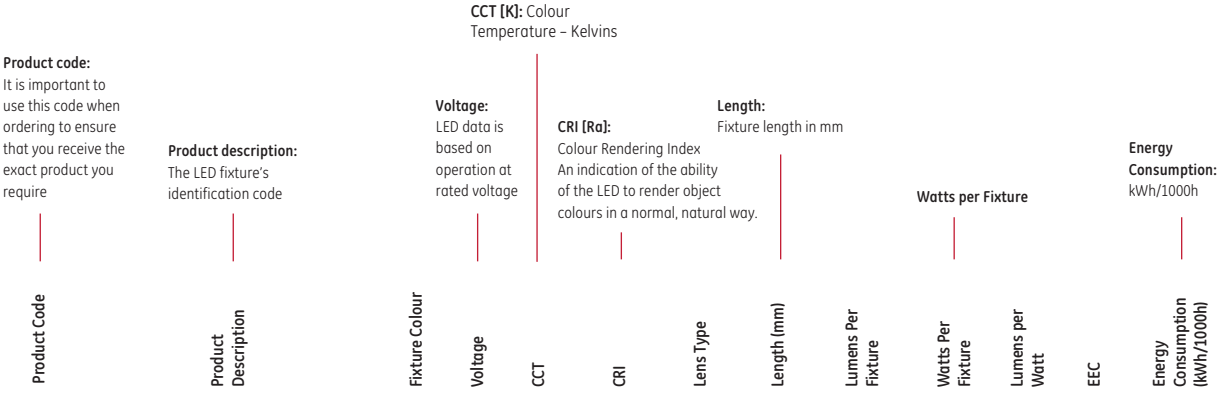
Tetra® Powergrid



This product is intended solely for the use of non-residential architecture lighting and is not intended for use in any other applications.

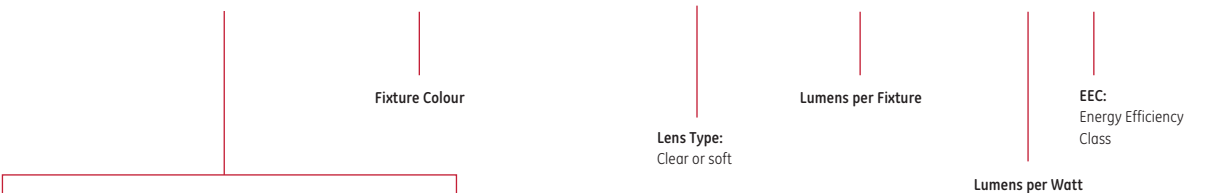
Product identification

The following glossary of terms will help you when selecting LED fixtures in this section. Within each product line, LEDs are divided into families – within these families, LEDs are listed by wattage. The Product Description can be used as a quick reference to each product’s attributes.



Tetra® AL10

Product Code	Product Description	Fixture Colour	Voltage	CCT	CRI	Lens Type	Length (mm)	Lumens Per Fixture	Watts Per Fixture	Lumens per Watt	EEC	Energy Consumption (kWh/1000h)
78867	LPL-W18-060C-927	White	12	2700	93	60° clear	460	290	6.8	43	A	7.48
78858	LPL-W09-090C-927	White	12	2700	93	90° clear	230	145	3.4	43	A	3.74
78874	LPL-W18-120C-927	White	12	2700	93	120° clear	460	290	6.8	43	A	7.48



Lens Type
Clear=C, Soft=D

Lens viewing angle
60°=060, 90°=090, 120°=120

CCT
2700K=27, 3000K=30, 4000K=40

LPL-W09-060C-927

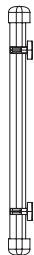
Length
230mm=09, 460mm=018

CRI
High>93=9

Body Colour
W=White, G=Grey

Internal GE Reference Code

Architectural LED Solutions



Bulk Pack Product Code	Bulk Pack Qty	Single Pack Product Code	Product Description	Colour	Wavelength/ Colour Temp	Viewing Angle (light engine)	Viewing Angle* (light engine w/ light guide)	Lumens per metre (light engine)	Lumens per metre (light engine w/ light guide)	Watts per metre (light engine)	Watts per metre (system)	EEC	Energy Consumption (kWh/1000h)
75481	12	62500	TETRA CONTOUR RED LED LIGHT ENGINE	Red	625nm	110	330	194	154	10.63	12.5	C	25.95
75484	6	62502	TETRA CONTOUR GREEN LED LIGHT ENGINE	Green	532nm	110	330	331	180	9.45	11.12	B	23.06
75485	6	62503	TETRA CONTOUR BLUE LED LIGHT ENGINE	Blue	467nm	110	330	75	62	9.45	11.12	N/A	N/A
75487	6	62488	TETRA CONTOUR LED LIGHT ENGINE 2700K	White	2700K	110	330	351	230	9.45	11.12	B	23.06
75488	6	62489	TETRA CONTOUR LED LIGHT ENGINE 3000K	White	3000K	110	330	384	249	9.45	11.12	B	23.06
75489	6	62491	TETRA CONTOUR LED LIGHT ENGINE 3500K	White	3500K	110	330	410	266	9.45	11.12	B	23.06
75490	6	62490	TETRA CONTOUR LED LIGHT ENGINE 4000K	White	4000K	110	330	430	279	9.45	11.12	B	23.06
75493	6	62492	TETRA CONTOUR LED LIGHT ENGINE 5000K	White	5000K	110	330	512	331	9.45	11.12	B	23.06
75486	6	62493	TETRA CONTOUR LED LIGHT ENGINE 6500K	White	6500K	110	330	472	308	9.45	11.12	B	23.06

Product Code	Pack Qty	Product Description
Tetra® Contour Accessories		
75529	12	TETRA CONT RED LIGHT GUIDE
75531	20	TETRA CONT RED LIGHT GUIDE END CAP
75530	20	TETRA CONT RED LIGHT GUIDE CONNECTOR
75495	20	TETRA CONT LIGHTGUIDE RED 90° INSIDE CORNER
75496	20	TETRA CONT LIGHTGUIDE RED 90° OUTSIDE CORNER
75497	20	TETRA CONT LIGHTGUIDE RED 90° PLANAR CORNER
75521	12	TETRA CONT GREEN LIGHT GUIDE
75523	20	TETRA CONT GREEN LIGHT GUIDE END CAP
75522	20	TETRA CONT GREEN LIGHT GUIDE CONNECTOR
75505	20	TETRA CONT LIGHTGUIDE GREEN 90° INSIDE CORNER
75503	20	TETRA CONT LIGHTGUIDE GREEN 90° OUTSIDE CORNER
75502	20	TETRA CONT LIGHTGUIDE GREEN 90° PLANAR CORNER
75526	12	TETRA CONT BLUE LIGHT GUIDE
75535	20	TETRA CONT BLUE LIGHT GUIDE END CAP
75527	20	TETRA CONT BLUE LIGHT GUIDE CONNECTOR
75500	20	TETRA CONT LIGHTGUIDE BLUE 90° INSIDE CORNER
75501	20	TETRA CONT LIGHTGUIDE BLUE 90° OUTSIDE CORNER
75504	20	TETRA CONT LIGHTGUIDE BLUE 90° PLANAR CORNER
75541	12	TETRA CONTOUR LIGHT GUIDE - WHITE
75532	20	TETRA CONTOUR END CAP - WHITE
75533	20	TETRA CONTOUR CONNECTOR - WHITE
75507	20	TETRA CONT LIGHTGUIDE WHITE 90° INSIDE CORNER
75499	20	TETRA CONT LIGHTGUIDE WHITE 90° OUTSIDE CORNER
75511	20	TETRACONT LIGHTGUIDE WHITE 90° PLANAR CORNER
62186	12	TETRA CONTOUR CLEAR LIGHT GUIDE
75612	1	0-10V Dimming Module; use with non-dimming GE LED Driver
75514	1	MINIMAX SUPPLY WIRE, 154.2m of 18 AWG Supply Wire (0.82mm ²)
75494	20	WEATHER BOX -PAINTABLE
75537	12	Tetra Contour Silicone Bend-Aid (Reusable) 406mm
75520	50	Tetra Contour Light Guide Mounting Clip
75498	20	Tetra Contour Light Engine Mounting Clip



Light Guide Connector



Weather Box



Light Guide End Caps



Light Guide Bend-Aid



Light Guide Corners



Mounting Clips



Supply Wire



Light Guide



Product Code	Pack Qty	Product Description	Full Product Description
98603	10	GEPS24-20 PS 24VDC/20W	LED Driver (24VDC/20W) Input Voltage: 96-264VAC, Damp Location Rated
67825	10	GEPS24-100UGL-IP	LED Driver (24VDC/100W) Input Voltage: 108-305VAC, Damp Location Rated
62189	1	GE180/MV/V24T1-C LED DRIVER	LED Driver (24VDC/180W) Input Voltage: 90-305VAC, Damp Location Rated
79045	1	GE080/MV/D24T1-A LED DIM DRIVER 0-10V	0-10V Dimming LED Driver (24VDC/80W): Input Voltage 90-305VAC: Damp Location Rated
75612	1	TETRA DIMMING MODULE	0-10V Dimming Module: use with non-dimming GE LED Driver

Tetra® Contour Drivers

Product Code	Product Description	Fixture Colour	Pack Qty	Voltage	CCT	CRI	Lens Type	Length (mm)	Lumens Per Fixture	Watts Per Fixture	Lumens per Watt	EEC	Energy Consumption (kWh/1000h)
--------------	---------------------	----------------	----------	---------	-----	-----	-----------	-------------	--------------------	-------------------	-----------------	-----	--------------------------------

Tetra® AL10

78867	LPL-W18-060C-927	White	10	12	2700	93	60° clear	460	290	6.8	43	A	7.48	*
78858	LPL-W09-090C-927	White	10	12	2700	93	90° clear	230	145	3.4	43	A	3.74	*
78874	LPL-W18-120C-927	White	10	12	2700	93	120° clear	460	290	6.8	43	A	7.48	*
78878	LPL-W18-120D-927	White	10	12	2700	93	120° soft	460	290	6.8	43	A	7.48	
78864	LPL-W09-120D-927	White	10	12	2700	93	120° soft	230	145	3.4	43	A	3.74	
78868	LPL-W18-060C-930	White	10	12	3000	93	60° clear	460	290	6.8	44	A	7.48	
78856	LPL-W09-060C-930	White	10	12	3000	93	60° clear	230	145	3.4	44	A	3.74	*
78872	LPL-W18-090C-930	White	10	12	3000	93	90° clear	460	290	6.8	44	A	7.48	
78859	LPL-W09-090C-930	White	10	12	3000	93	90° clear	230	145	3.4	44	A	3.74	*
78875	LPL-W18-120C-930	White	10	12	3000	93	120° clear	460	290	6.8	44	A	7.48	
78862	LPL-W09-120C-930	White	10	12	3000	93	120° clear	230	145	3.4	44	A	3.74	*
78879	LPL-W18-120D-930	White	10	12	3000	93	120° soft	460	290	6.8	44	A	7.48	
78865	LPL-W09-120D-930	White	10	12	3000	93	120° soft	230	145	3.4	44	A	3.74	*
78870	LPL-W18-060C-940	White	10	12	4000	93	60° clear	460	290	6.8	47	A	7.48	
78857	LPL-W09-060C-940	White	10	12	4000	93	60° clear	230	145	3.4	47	A	3.74	*
78873	LPL-W18-090C-940	White	10	12	4000	93	90° clear	460	290	6.8	47	A	7.48	
78860	LPL-W09-090C-940	White	10	12	4000	93	90° clear	230	145	3.4	47	A	3.74	*
78877	LPL-W18-120C-940	White	10	12	4000	93	120° clear	460	290	6.8	47	A	7.48	
78863	LPL-W09-120C-940	White	10	12	4000	93	120° clear	230	145	3.4	47	A	3.74	*
78880	LPL-W18-120D-940	White	10	12	4000	93	120° soft	460	290	6.8	47	A	7.48	
78866	LPL-W09-120D-940	White	10	12	4000	93	120° soft	230	145	3.4	47	A	3.74	*
78881	LPL-G09-060C-927	Grey	10	12	2700	93	60° clear	230	145	3.4	43	A	3.74	*
78890	LPL-G09-120D-927	Grey	10	12	2700	93	120° soft	230	145	3.4	43	A	3.74	*
78897	LPL-G18-090C-930	Grey	10	12	3000	93	90° clear	460	290	6.8	44	A	7.48	*
78885	LPL-G09-090C-930	Grey	10	12	3000	93	90° clear	230	145	3.4	44	A	3.74	*

*While stock lasts

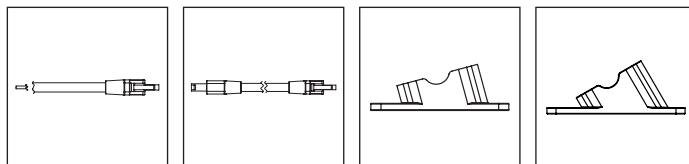


Architectural LED Solutions

Product Code	Pack Qty	Product Description	Full Product Description
Tetra® AL10 Accessories			
78905	5	LC-36	Leader Cable 914 mm
78906	5	LC-120	Leader Cable 3048 mm
78907	5	JC-12	Jumper Cable 305 mm
78908	5	JC-72	Jumper Cable 1829 mm
78909	20	MB-W15	Mounting Bracket - White 15° Angle
78910	20	MB-W30	Mounting Bracket - White 30° Angle
78911	20	MB-G15	Mounting Bracket - Grey 15° Angle**
78912	20	MB-G30	Mounting Bracket - Grey 30° Angle**
62814	20	LPL-MAGNET.MOUNTING.BRACKET (WHITE.0	0 degree magnetic mounting bracket
62187	10	LPL-MT W/SHIELD [36.00]	Mounting Track with a 36 degree light shield

**Available while Grey Fixtures stocks last

Product Code	Pack Qty	Product Description	Full Product Description
Tetra® AL10 Drivers			
67824	1	GEPS12-60UGL-IP	LED Driver 12V 60W
74914	1	GE020/G/V12T1-B	LED Driver 12V 20W
75612	10	TETRA DIMMING MODULE	TETRA DIMMING MODULE 12-24V, 0-10V DC
79044	10	GE060/MV/D12T1-A LED DIM DRIVER 0-10V	LED Driver 12V 60W



Leader Cable

Jumper Cable

15° Mounting Bracket

30° Mounting Bracket

Product Code	Pack Qty	Product Description	Input Voltage	CCT	+/- CCT	Module Lumen	LPW	CRI	Wattage per M	Length mm	Lens Type	IP Rating	Lumens per Metre
--------------	----------	---------------------	---------------	-----	---------	--------------	-----	-----	---------------	-----------	-----------	-----------	------------------

LED Cove

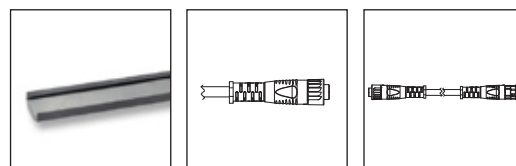
13673	10	LWW2-MO12-110-827	220-240VAC 50Hz	2700	+90/-55	350	70	80	18.5	316	100° soft	IP20	1094
13684	10	LWW2-MO12-110-840	220-240VAC 50Hz	4000	+104/-170	400	80	80	18.5	316	100° soft	IP20	1250
13675	10	LWW2-HO12-110-827	220-240VAC 50Hz	2700	+90/-88	630	63	80	31.6	316	100° soft	IP20	1969



Product Code	Product Description	Full Product Description
--------------	---------------------	--------------------------

LED Cove Accessories

13687	LWW2-LC1-120	3048 mm (120") Leader Cable 1/PK
13690	LWW2-JC1-12	1219 mm (48") Jumper Cable 1/PK
13691	LWW2-JC1-48	305 mm (12") Jumper Cable 1/PK
65467	LWW1-MT48/0	1219 mm (48") Mounting Track 10/PK



Track

Leader Cable

Jumper Cable

The images are guide only, see detailed data sheet. New range available late 2015.



Product Code	Pack Qty	Product Description	Input Voltage	CCT	Wattage [W]	Lumens per Fixture [ft/m]	Min. LPW	CRI	Length [mm]	Lens Type	Application	IP Rating
10739	10	LLWSOB004CV827VQTMWWHITE	120V -277VAC/50Hz/60Hz	2700	5.0W	380 (367/1203)	76	80	320	100° soft	Cove	IP20
10740	10	LLWSOB004CV830VQTMWWHITE	120V -277VAC/50Hz/60Hz	3000	5.0W	420 (405/1329)	84	80	320	100° soft	Cove	IP20
10741	10	LLWSOB004CV835VQTMWWHITE	120V -277VAC/50Hz/60Hz	3500	5.0W	420 (405/1329)	84	80	320	100° soft	Cove	IP20
10747	10	LLWSOB004CV840VQTMWWHITE	120V -277VAC/50Hz/60Hz	4000	5.0W	430 (415/1361)	86	80	320	100° soft	Cove	IP20
10750	10	LLWHOB004CV827VQTMWWHITE	120V -277VAC/50Hz/60Hz	2700	5.0W	380 (367/1203)	76	80	320	100° soft	Cove	IP20
10754	10	LLWHOB004CV830VQTMWWHITE	120V -277VAC/50Hz/60Hz	3000	5.0W	420 (405/1329)	84	80	320	100° soft	Cove	IP20
10758	10	LLWHOB004CV835VQTMWWHITE	120V -277VAC/50Hz/60Hz	3500	5.0W	420 (405/1329)	84	80	320	100° soft	Cove	IP20
10763	10	LLWHOB004CV840VQTMWWHITE	120V -277VAC/50Hz/60Hz	4000	5.0W	430 (415/1361)	86	80	320	100° soft	Cove	IP20
10785	10	LLWSOB004WW827VQTMWWHITE	120V -277VAC/50Hz/60Hz	2700	5.0W	380 (367/1203)	76	80	320	30° x 80°	Wall Washer	IP20
10787	10	LLWSOB004WW830VQTMWWHITE	120V -277VAC/50Hz/60Hz	3000	5.0W	420 (405/1329)	84	80	320	30° x 80°	Wall Washer	IP20
10789	10	LLWSOB004WW835VQTMWWHITE	120V -277VAC/50Hz/60Hz	3500	5.0W	420 (405/1329)	84	80	320	30° x 80°	Wall Washer	IP20
10801	10	LLWSOB004WW840VQTMWWHITE	120V -277VAC/50Hz/60Hz	4000	5.0W	430 (415/1361)	86	80	320	30° x 80°	Wall Washer	IP20
10861	10	LLWHOB004WW827VQTMWWHITE	120V -277VAC/50Hz/60Hz	2700	8.0W	650 (627/2057)	81	80	320	30° x 80°	Wall Washer	IP20
10862	10	LLWHOB004WW830VQTMWWHITE	120V -277VAC/50Hz/60Hz	3000	8.0W	730 (704/2310)	91	80	320	30° x 80°	Wall Washer	IP20
10864	10	LLWHOB004WW835VQTMWWHITE	120V -277VAC/50Hz/60Hz	3500	8.0W	730 (704/2310)	91	80	320	30° x 80°	Wall Washer	IP20
10867	10	LLWHOB004WW840VQTMWWHITE	120V -277VAC/50Hz/60Hz	4000	8.0W	750 (723/2373)	94	80	320	30° x 80°	Wall Washer	IP20
10868	10	LLWSOB004GZ827VQTMWWHITE	120V -277VAC/50Hz/60Hz	2700	8.0W	650 (627/2057)	81	80	320	15° x 80°	Wall Grazer	IP20
10869	10	LLWSOB004GZ830VQTMWWHITE	120V -277VAC/50Hz/60Hz	3000	8.0W	730 (704/2310)	91	80	320	15° x 80°	Wall Grazer	IP20
10888	10	LLWSOB004GZ835VQTMWWHITE	120V -277VAC/50Hz/60Hz	3500	8.0W	730 (704/2310)	91	80	320	15° x 80°	Wall Grazer	IP20
10889	10	LLWSOB004GZ840VQTMWWHITE	120V -277VAC/50Hz/60Hz	4000	8.0W	750 (723/2373)	94	80	320	15° x 80°	Wall Grazer	IP20
10892	10	LLWHOB004GZ827VQTMWWHITE	120V -277VAC/50Hz/60Hz	2700	8.0W	650 (627/2057)	81	80	320	15° x 80°	Wall Grazer	IP20
10895	10	LLWHOB004GZ830VQTMWWHITE	120V -277VAC/50Hz/60Hz	3000	8.0W	730 (704/2310)	91	80	320	15° x 80°	Wall Grazer	IP20
10899	10	LLWHOB004GZ835VQTMWWHITE	120V -277VAC/50Hz/60Hz	3500	8.0W	730 (704/2310)	91	80	320	15° x 80°	Wall Grazer	IP20
10901	10	LLWHOB004GZ840VQTMWWHITE	120V -277VAC/50Hz/60Hz	4000	8.0W	750 (723/2373)	94	80	320	15° x 80°	Wall Grazer	IP20

Performance data is subject to amendment

Product Code	Pack Qty	Product Description	Full Product Description
10902	1	LWW2-LC2-120	GE LED Wall Washer, Leader Cable, 120in.(3048mm) With One End Cap
10903	1	LWW2-JC2-12	GE LED Wall Washer, Jumper Cable, 12in.(305mm)
10904	1	LWW2-JC2-48	GE LED Wall Washer, Jumper Cable, 48in.(1219mm)
65467	10	LWW1-MT48/0	48" (1219mm) Mounting Track 10/PK

Architectural LED Solutions

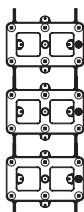


Product Code	Pack Qty	Product Description	CCT +/-	Lens	Strip W/ Module (per/m)	System W/ Module (per/m)	Lm/ Module	LPW (System)
LED Accent								
65456	1	NL1-140-827	2700K + 90/-40	120°	0.67 (5.49)	0.84 (6.89)	27 (68,221)	32
65457	1	NL1-140-830	3000K + 115/-25	120°	0.67 (5.49)	0.84 (6.89)	28 (70,230)	33
65458	1	NL1-140-840	4000K + 121/-151	120°	0.67 (5.49)	0.84 (6.89)	28 (70,230)	33

Please note 1 pack = 6.1 metres. Visit the GE website for new ungraded Accent *3" led product later in 2015.

Product Code	Pack Qty	Product Description	Full Product Description
LED Accent Accessories			
75514	1	MINIMAX SUPPLY WIRE	18 AWG Supply Wire (0.82mm ²) (152.4m)
75545	500	18-14AWG IN-LINE CONN IDC	18-14 AWG In-Line Splice Connector (0.82-2.08mm ²)
65459	5	NL1-MT48/0	Mounting Track 0° or 30° Angle, 1219mm

Product Code	Pack Qty	Product Description	CCT +/-	Lens	Strip W/ Module (per/m)	System W/ Module (per/m)	Lm/ Module	LPW (System)
LED Accent Drivers								
75612	10	GEDM1-A						Tetra Dimming Module (0-10v)
67824	10	GEPS12-60UGL-IP						LED Driver (12VDC/60W); Input Voltage: 90-264VAC; Damp Location Rated
74914	1	GE020/G/V12T1-B						LED Driver (12VDC 20W) Input voltage: 90-264VAC, Damp Location Rated
79044	10	GE060/MV/D12T1-A						0-10V Dimming LED Driver (12VDC/ 60W); Input Voltage 90-305VAC, Damp Location Rated



Product Code	Pack Qty	Product Description	CCT +/-	Lens	Strip W /Module	System W /Module	Lm /Module	LPW (System)	Modules/Strip	EEC	Energy Consumption (kWh/1000h)
Tetra® PowerGrid											
94900	1	GEWWPG2P6-27K-A	2700K + 95 /-95	150°	3.6 W	4.2W	200	47.6	21	A+	0.16
65463	1	GEWWPG2P6-35K-A	3500K + 89/-163	150°	3.6 W	4.2W	229	55	21	A+	0.16
65464	1	GEWWPG2P6-40K-A	4000K + 121/-161	150°	3.6W	4.2W	229	55	21	A+	0.16

Visit the GE website for new ungraded Powergrid product later in 2015.

Product Code	Pack Qty	Product Description	Full Product Description
Tetra® PowerGrid Accessories			
75514	1	MINIMAX SUPPLY WIRE	18 AWG Supply Wire (0.82mm ²) (152.4m)
75545	500	18-14AWG IN-LINE CONN IDC	18-14 AWG In-Line Splice Connector (0.82-2.08mm ²)
75546	100	POWERGRID END CAP	0.33-0.82mm ² Wire End Caps

Product Code	Pack Qty	Product Description	Full Product Description
Tetra® PowerGrid Drivers			
98603	10	GEPS24-20 PS 24VDC/20W	LED Driver (24VDC/20W) Input Voltage: 96-264VAC, Damp Location Rated
67825	10	GEPS24-100UGL-IP	LED Driver (24VDC/100W) Input Voltage:108-305VAC, Damp Location Rated
62189	1	GE180/MV/V24T1-C	LED Driver (24VDC/180W) Input Voltage: 90-305VAC, Damp Location Rated
79045	10	GE080/MV/D24T1-A 0-10V	0-10V Dimming LED Driver (24VDC/80W); Input Voltage 90-305VAC; Damp Location Rated



